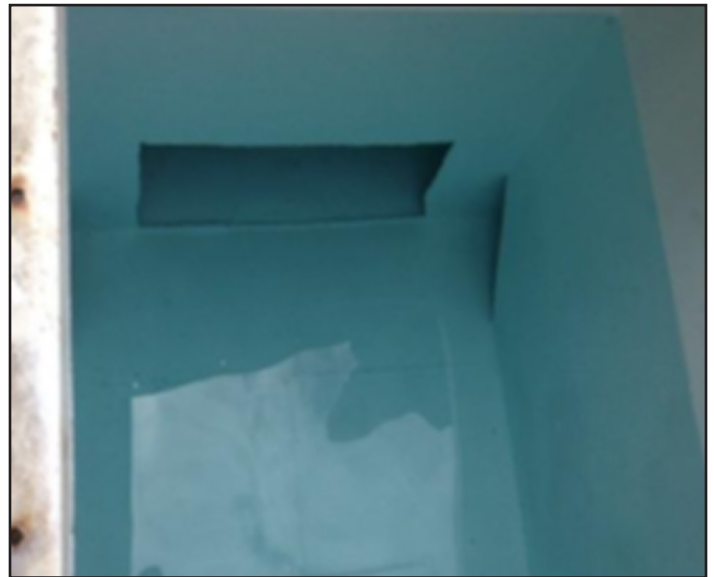
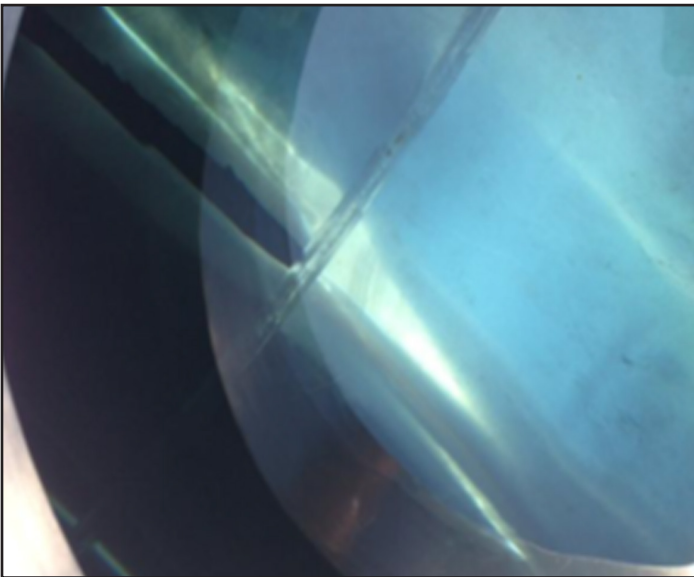


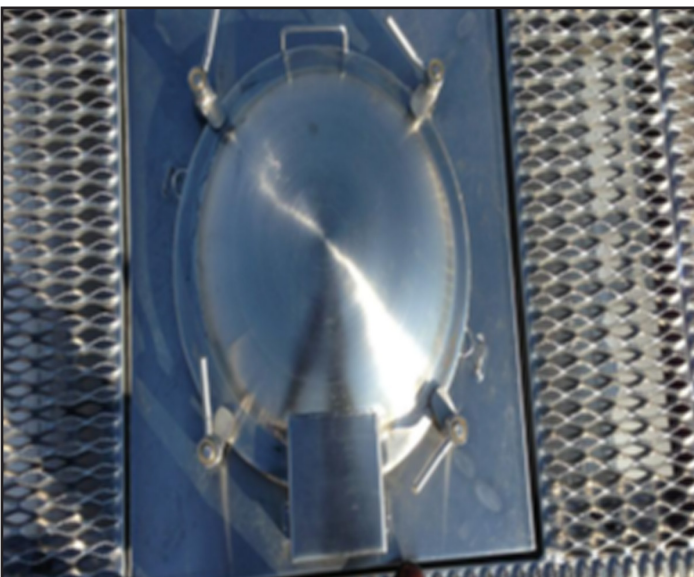


Drinking Water Haulage Vehicle Requirements

1. Ensure drinking water is obtained from a supply that complies with the requirements of Ontario Regulation 169/03 (Ontario Drinking Water Quality Standards). Water from municipal fill stations meets these requirements.
2. Ensure all surfaces in contact with potable water are food grade, corrosion resistant, and readily cleanable.



3. Ensure all inlets and openings are constructed and maintained to prevent contamination from pests or any other contaminant and are covered and sealed at all times except when filling/emptying/cleaning.



4. Ensure any article or piece of equipment that is used for distribution of drinking water is:
- Of sound, tight construction
 - Kept in good repair
 - Surfaces can be readily cleaned and sanitized
 - Corrosion resistant and non-toxic
 - Free of cracks, crevices, and open seams
 - Protected from contamination (road dust, bird droppings etc.) when not in use (lines and inlets capped and sealed)



Other requirements:

- Ensure water Tank is clearly labeled “Drinking water” or “Potable Water”
- Ensure the tank and equipment are cleaned and sanitized as often as necessary to maintain them in sanitary condition.
- Any lubricant that may come in contact with the drinking water is of such quality that it will not contaminate the water or cause a health hazard (food grade).
- Have a spray bottle with bleach solution to sanitize any hose or connection that will be inserted into a cistern and chlorine test strips to verify sanitizer concentration.
- Verify and record Free Available Chlorine residual at the first delivery of each day using a digital readout chlorine meter.
- Maintain a log of all fill-ups and deliveries including the date, time, location, and volume of the fill-up or delivery.
- Record any cleaning or maintenance of the water tank or water delivery equipment in the log book.

Created March 2017

