

HALDIMAND & NORFOLK -Enhanced 18-Month Well Baby Early Childhood and Parenting Referral Tool

June 2012

18 Month Well Baby Consult- **Nipissing Screen** (Parent & Physician)
 Generalized Delay and/or Developmental Concerns- Use **Rourke Record** (Physician)

No Developmental Concerns

Developmental Concerns

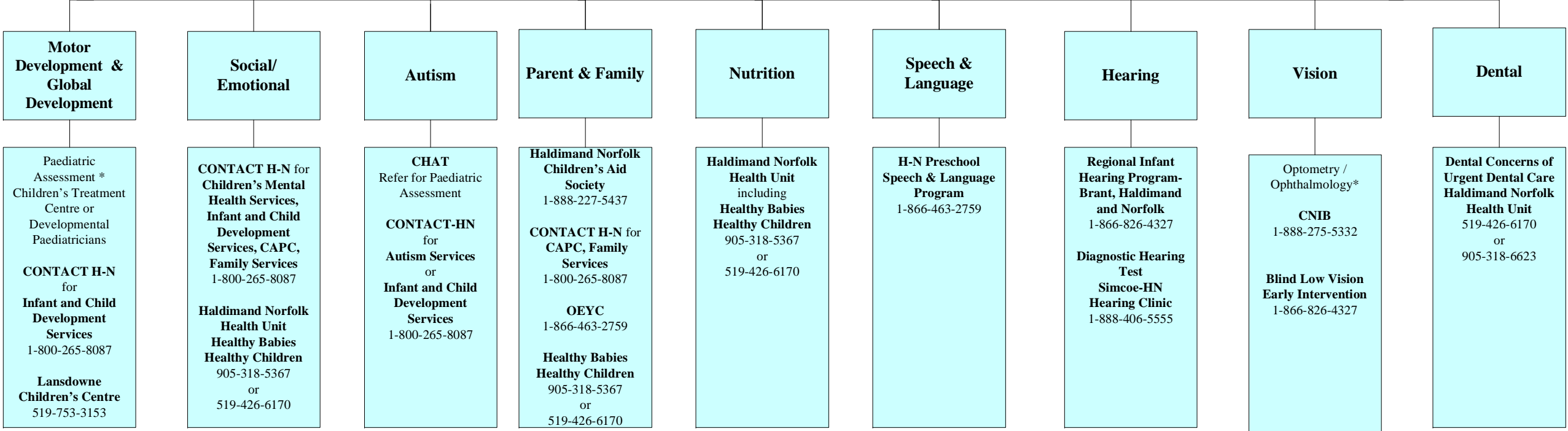
OEYC H&N
 For more info on parent/child community programming
 1-866-463-2759

No Developmental concerns and all “yes” checks on the age appropriate screening sheet

Developmental Concerns and/or one or more “no’s” on Nipissing Screen

OEYC H&N
 For more info on parent/child community programming
 1-866-463-2759

Services



Paediatric Assessment *
 Children’s Treatment Centre or Developmental Paediatricians
CONTACT H-N for **Infant and Child Development Services**
 1-800-265-8087
Lansdowne Children’s Centre
 519-753-3153

CONTACT H-N for **Children’s Mental Health Services, Infant and Child Development Services, CAPC, Family Services**
 1-800-265-8087
Haldimand Norfolk Health Unit Healthy Babies Healthy Children
 905-318-5367 or 519-426-6170

CHAT
 Refer for Paediatric Assessment
CONTACT-HN for **Autism Services** or **Infant and Child Development Services**
 1-800-265-8087

Haldimand Norfolk Children’s Aid Society
 1-888-227-5437
CONTACT H-N for **CAPC, Family Services**
 1-800-265-8087
OEYC
 1-866-463-2759
Healthy Babies Healthy Children
 905-318-5367 or 519-426-6170

Haldimand Norfolk Health Unit including **Healthy Babies Healthy Children**
 905-318-5367 or 519-426-6170

H-N Preschool Speech & Language Program
 1-866-463-2759

Regional Infant Hearing Program- Brant, Haldimand and Norfolk
 1-866-826-4327
Diagnostic Hearing Test
Simcoe-HN Hearing Clinic
 1-888-406-5555

Optometry / Ophthalmology*
CNIB
 1-888-275-5332
Blind Low Vision Early Intervention
 1-866-826-4327

Dental Concerns of Urgent Dental Care Haldimand Norfolk Health Unit
 519-426-6170 or 905-318-6623

Universal Program
 Treatment & Intervention Services
 * For a listing of Paediatricians, Optometrist or Ophthalmologists, see supplementary referral list provided

Referral information for :
 - Six Nations of the Grand River : Six Nations Health Services Gane Yohs Health Centre/ Ohsweken Public Health Office - 519-445-2672
 - Mississaugas of the New Credit First Nation 905-768-1133

Note- repeat screening periodically