

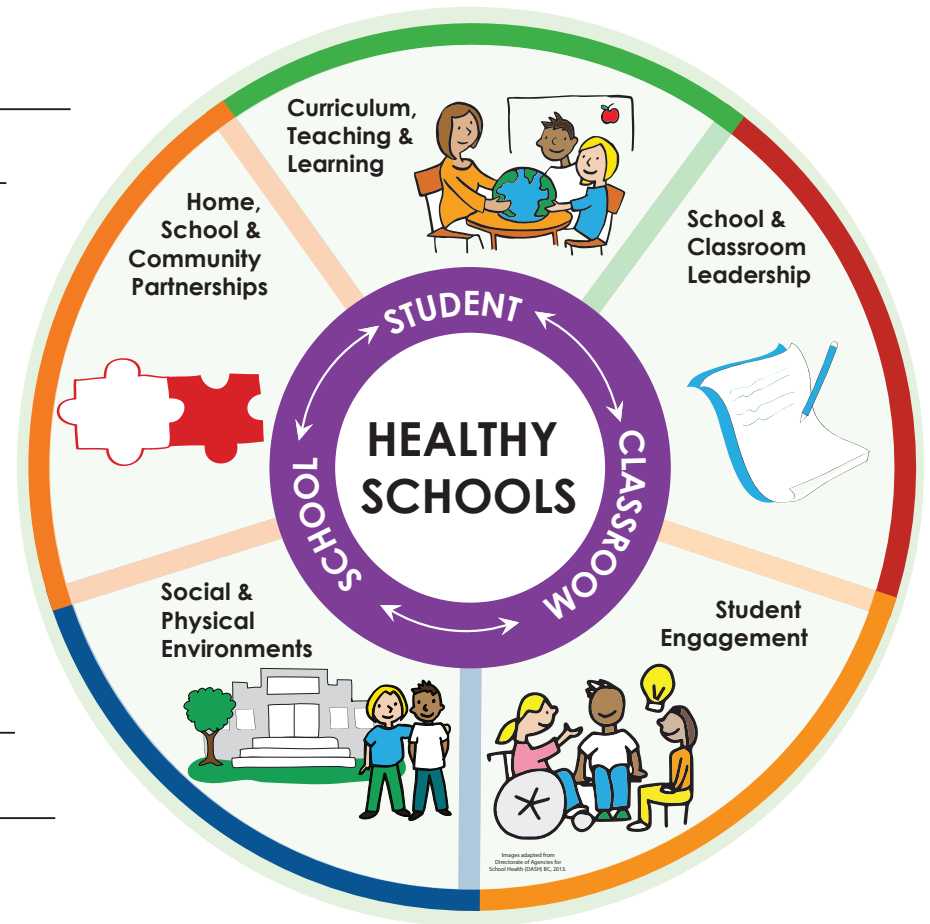
Healthy School Action Plan

School: _____ School year: _____

Plan completed by: _____

Health topic/area of focus: _____

Goal: _____



Foundations for a Healthy School

Activity #1

Healthy School
Foundations Addressed:

- Home, School & Community Partnerships
- Curriculum, Teaching & Learning
- School & Classroom Leadership
- Student Engagement
- Social & Physical Environments

What will success look like?
(Be specific. e.g. 50 more students walk or bike to school)

Task	Person(s) Responsible	Deadline	Budget or Resources Needed	Task Status NS = not started IP = in progress C = complete	How did it go? (e.g. How many people were there, what was created, what did you learn, what was given out, etc.)



Task	Person(s) Responsible	Deadline	Budget or Resources Needed	Task Status NS = not started IP = in progress C = complete	How did it go? (e.g. How many people were there, what was created, what did you learn, what was given out, etc.)



Activity #2

Healthy School
Foundations Addressed:

- Home, School & Community Partnerships
- Curriculum, Teaching & Learning
- School & Classroom Leadership
- Student Engagement
- Social & Physical Environments

What will success look like?
(Be specific. e.g. 50 more students walk or bike to school)

Task	Person(s) Responsible	Deadline	Budget or Resources Needed	Task Status NS = not started IP = in progress C = complete	How did it go? (e.g. How many people were there, what was created, what did you learn, what was given out, etc.)



Activity #3

Healthy School
Foundations Addressed:

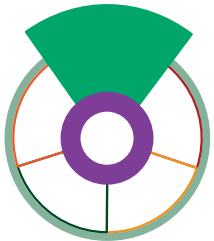
- Home, School & Community Partnerships
- Curriculum, Teaching & Learning
- School & Classroom Leadership
- Student Engagement
- Social & Physical Environments

What will success look like?
(Be specific. e.g. 50 more students walk or bike to school)

Task	Person(s) Responsible	Deadline	Budget or Resources Needed	Task Status NS = not started IP = in progress C = complete	How did it go? (e.g. How many people were there, what was created, what did you learn, what was given out, etc.)

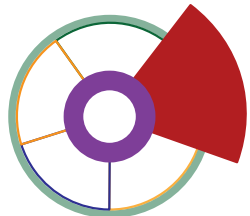


Foundations of a Healthy School



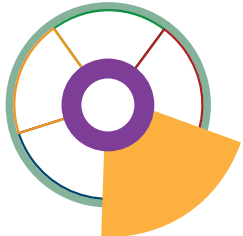
Curriculum, Teaching and Learning

- Combining classroom learning with other formal and informal resources and activities to help students, and staff, gain skills and knowledge related to their health



School and Classroom Leadership

- Developing guidelines, rules and policies that help shape a caring, safe and healthy school setting for students and staff



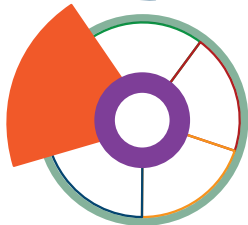
Student Engagement

- Offering opportunities and encouragement for students to be active leaders and contributors in the quest to make themselves, their peers and their school community healthier



Social and Physical Environments

- Creating a social climate and physical environment (e.g. playgrounds, school building, sidewalks, etc.) at the school which support healthy choices



Home, School and Community Partnerships

- Making strong connections between schools, families, community groups, public health and others who support student health

Jot your thoughts!

Doodle your ideas!



A large rectangular area enclosed by a dashed green border, intended for doodling ideas.