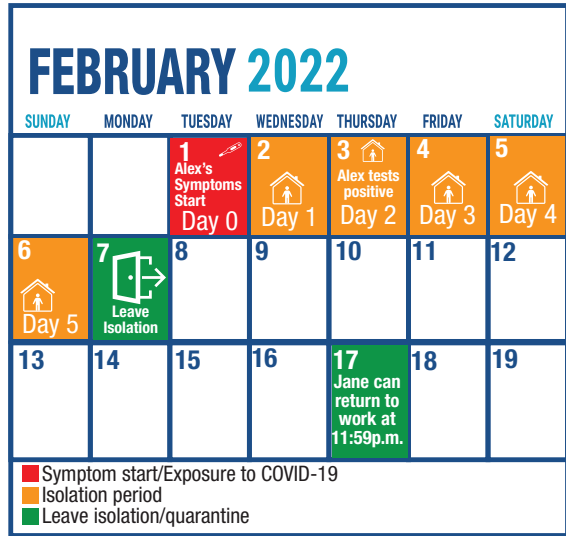
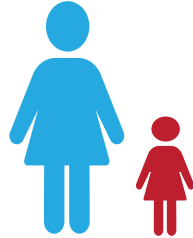


# What to do when you work at a highest risk setting and a household member tests positive for COVID

**Jane – works at RH and lives with her unvaccinated 4 year old, Alex.**



**Alex develops symptoms of COVID-19 on February 1.** Alex and Jane begin self-isolation. Jane and Alex isolate together in their home. Alex is eligible for PCR testing because Jane works at a retirement home. **Alex tests positive for COVID-19 on February 3rd.**

**Alex must isolate for 5 days, until February 6<sup>th</sup> at 11:59 p.m.** Jane isolates for the same amount of time as Alex.

**Jane cannot attend work for 10 days from her last exposure.** Since Jane and Alex isolated together, **Jane's last exposure to Alex was on February 6<sup>th</sup>.** Jane can return to work after February 16<sup>th</sup> at 11:59 p.m.

**\*If Jane tested positive for COVID-19 in the last 90 days and the infection has resolved, she does not need to isolate and can continue to work.**